



# KODA<sup>BY KODASEMA</sup>A

MOVABLE HOUSING SOLUTIONS

## KODA LOFT EU MODEL

Comfort provided by a smaller footprint where nordic feel and finest design are built on a steel reinforced timber structure.

The elegant 26sqm KODA Loft includes an open-space living room, a full size sleeping area, a shower room with toilet, a kitchen and a wooden terrace. Year around living is enabled by the mineral wool insulation.

All the KODA needs is ground with leveled footing, sufficient weight-bearing capacity and connection points for water, electricity and sewage. Lifting and shifting are done by Kodasema, an authorized partner or local contractor. One day for installation – **pack the toothbrush and move in.**



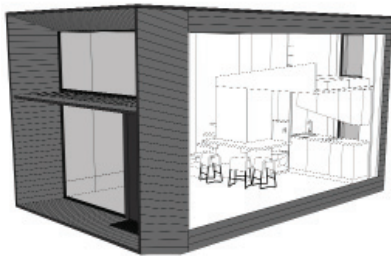
# KODA LOFT IN NUMBERS

Gross buildable area	28,8sqm
Usable floor area	26,7sqm
Weight	10 tonnes

L7226, W3930, H 4000 mm / L23.7, W 12.9, H13.1 ft

U Values	
U <sub>wall</sub> =	0,27 W (m <sup>2</sup> K)
U <sub>ceiling</sub> =	0,173 ~ 0,17 W (m <sup>2</sup> K)
U <sub>floor</sub> =	0,169~ 0,17 W (m <sup>2</sup> K)

**ARCHITECTS:** Ülar Mark, Maria Alnek, Liina-Liis Pihu  
**INTERIOR ARCHITECT:** Angela Orgusaar



## STRUCTURE

KODA walls, ceiling, floor and terrace  
 Interior finish: plywood walls and ceiling, laminate floor  
 Glass facade, 3 layered  
 Windows in kitchen and sleeping area (openable)  
 Front door  
 Sunshade  
 Technical room

## MEP (Mechanical, Electrical, Plumbing)

Electrical cables integrated in panels  
 Electrical connection 20A 3Ph  
 LED lighting, readiness for pendant lights  
 Sewage connection  
 Water and plumbing connections  
 Ventilation system  
 Water boiler

## FURNISHINGS

Sleeping area (mezzanine)  
 Kitchen cabinets  
 Built-in fridge  
 Induction hob  
 Curtain groove in sunshade  
 Bathroom with sanitary equipment  
 Mirror in living area

## EXTRAS

Natural engineered wood floor  
 Kitchen hood, integrated  
 Kitchen cabinets on side wall  
 Dishwasher or washing machine  
 Nano-laminate work-top  
 Premium mixers in bathroom and kitchen  
 Integrated dining table

## EXTERIOR EQUIPMENT

Mailbox (open)  
 Ladder installed on back wall  
 Bicycle holder

## EXTERIOR FINISH

Default - timber cladding, in various tones  
 Extra - Steel cladding, in various tones  
 Extra - Composite panels in various tones



TELL US WHAT  
YOU NEED:

[sales@kodasema.com](mailto:sales@kodasema.com)



A freestanding KODA  
for private use:

top quality architecture | movable | sustainable |  
stackable | zen | offsite prefab |

A movable KODA Park  
for real-estate development:

hotel | office | café | studio | classroom | retail |  
co-working

KODA for society or  
public services:

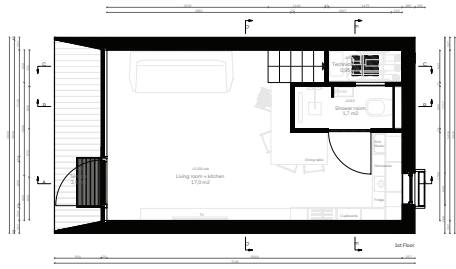
infill | built-to-rent | dynamic cities and planning |  
quick, easy & flexible



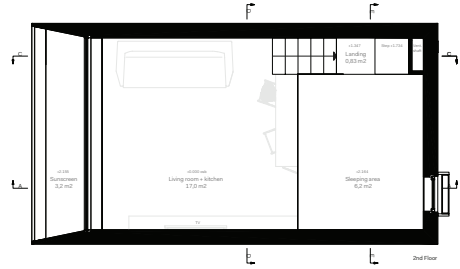
Find the most recent info on all KODA models and  
KODA Park solutions on our website and sign up for  
our newsletter for monthly updates!

[kodasema.com](http://kodasema.com)

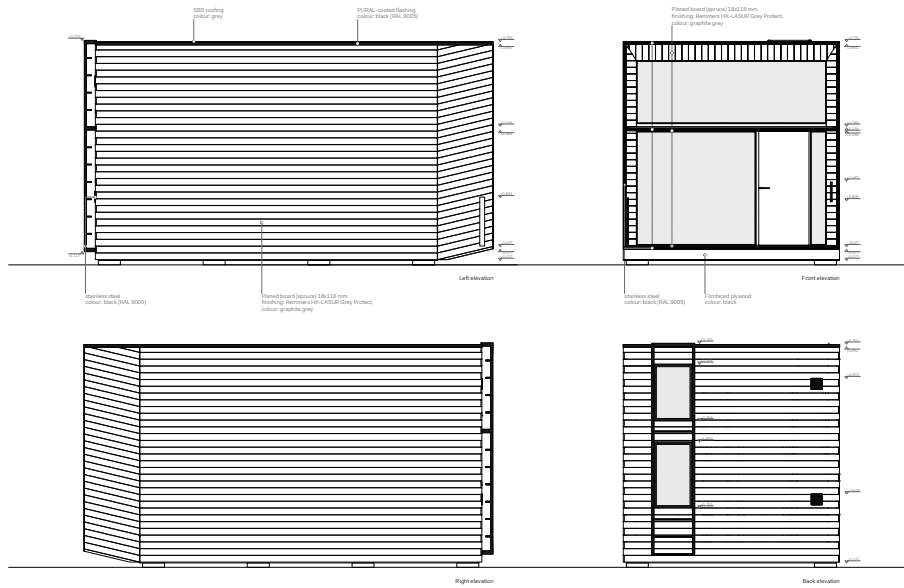




Ground floor plan



First floor plan



Sideviews



Indoor views

# KODA

BY KODASAMA

MOVABLE HOUSING SOLUTIONS



WORLD Architecture Festival 2016:  
SMALL PROJECT PRIZE FINALIST 2017:  
SCHOOLS FINALIST



WAN Urban Challenge 2017:  
London Housing  
COMPETITION WINNER



American Architecture Prize 2016:  
SILVER MEDAL FOR INTERIOR 2017  
HOSPITALITY ARCHITECTURE &  
URBAN DESIGN WINNER



DNA Paris Design Awards Winner 2019  
KODA Park INTERIOR DESIGN / Sustainable living  
ARCHITECTURE / Green Architecture



OPAL winner 2019  
Property development